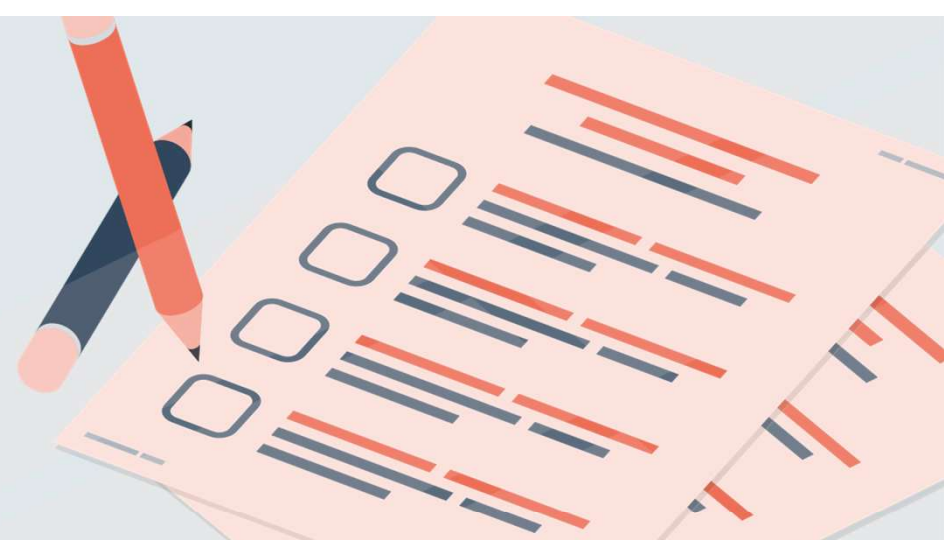


Applying for linked data in WA

While each application for linked data is unique, we have summarised the process into a few key steps to assist Researchers.



1

Plan your study

Review datasets, relevant policies, and processes on the Data Linkage Services WA website. Discuss your project with the Information and System Performance Directorate (ISPD) Client Services Team before applying.



2

Create a project workspace in the RGS

Create a user log in and project workspace in the Research Governance System (RGS). Researchers will need to complete a Declaration of Confidentiality.



3

Determine which forms to complete

Review the forms and other documents you might need to complete and contact the ISPD Client Services Team if you have any questions.



4

Data Custodian and feasibility assessment

Email your draft application to the ISPD Client Services Team. They will liaise with relevant parties to review your application. A data linkage feasibility letter will be provided upon approval.



5

Submit to the Ethics Committee

Submit your Human Research Ethics Committee application via RGS. Once approved, email your approval letter and all documents listed to the ISPD Client Services Team.



6

Data Custodian formal review

Lodge your final application for data to the ISPD Client Services Team who will coordinate formal Data Custodian approval. You will be notified once approval is obtained.



7

Research Governance approval

Submit applications for governance review with the Research Governance Office via RGS. Applications must include either a Site-Specific Assessment Form or an Access Request Form.



8

Final approval

Once HREC, Data Custodian, and Research Governance approvals are obtained, data will be released via secure online file transfer or access data via an e-Research platform.